



**CALIF.
PRE-CUT
HOMES™**

Dennis & Matt Foster

425 El Pintado Rd. Suite 190, Danville, CA 94526-1804
24 Hour Messages (925) 838-2859
24 Hour Fax Line (925) 855-1051
Email: Dfoster@caprecut.com
Mfoster@caprecut.com
www.CAPRECUT.com

Greetings :

Thank you for asking for information about CALIF. PRE-CUT HOMES, a licensed dealer for "Pacific Modern Homes, Inc." PMHI, a custom stick home builder.

This privately owned and operated company has packaged thousands of homes in California and around the world since 1968. Their quality panelized wall and roof truss system have all the features you expect in a custom stick built home, but at a fraction of the cost. Included is dry Douglas Fir studded walls, with vinyl dual-pane low E windows with 19/32" T1-11 O.S.B. siding or 3/8" O.S.B. shear. The walls are assembled in the factory environment for precision fit and shipped to your job site for erection by you or your contractor. See the enclosed "package specifications" sheet for all the other standard features.

The package starts at \$12.00 per square foot for garages, and goes up to about \$35.00 per square foot for houses. In our packages, we provide you with the rough shell of your building, walls, windows, hardware, siding, trim, and roof system. Also available are cabins, chalets, duplexes, granny units, additions, apartments, and barns. Whether you want to choose from one of our many standard floor plans, or design your own, we can help. You can save 20% to 50% on your new home by using the P.M.H.I. Building System through CALIF. PRE-CUT HOMES. **Let us show you how!**

If you don't see precisely what you want among our standard floor plans, please use our catalog as a springboard for designing your "Dream Home". More than seventy percent of our packages are not in any of the floor plan that we have available for you to choose from. If you are interested in a plan that is not in our catalog, please ask about our custom design service. The success of our business is designing and building your "New Dream Building".

It has been our pleasure being in this industry since 1976. Over 39 years in the housing industry. We have helped thousands of families throughout California and the West build their "Dream Home" with CALIF. PRE-CUT HOMES. We look forward to helping you and your family. Please feel free to call any of the above phone numbers for further information.

Sincerely,




Dennis A. Foster & Matthew K. Foster

Pacific Modern Homes, Inc. "Dealer of the year" #1; 1993, 1994, 1996, 1997, 1998, 1999, 2000, 2001, 2002, 2003, 2004, 2006, 2007, 2008, 2009, & 2012

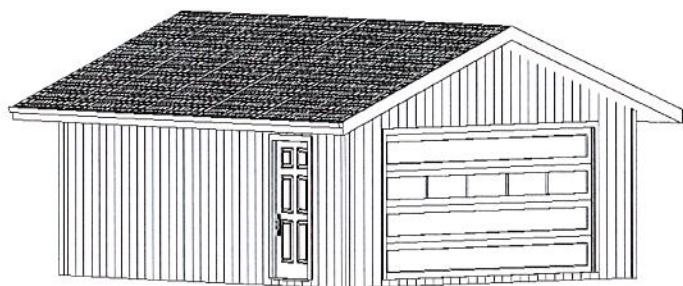
Second runner up for "Dealer of the year" #2; 1986, 1987, 1988, 1989, 1990, 1991, 1992, 1995, 2005, 2011, 2013, 2014, & 2015



**CALIF.
PRE-CUT
HOMES™**

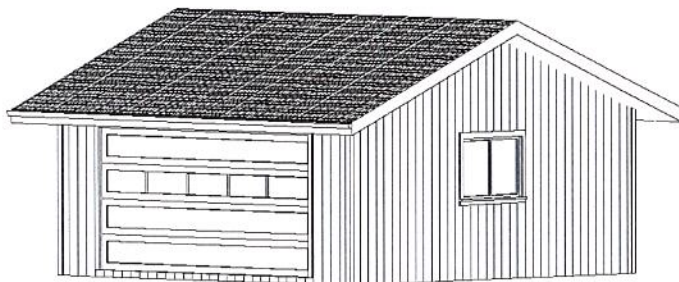
Dennis & Matt Foster
425 El Pintado Rd. Suite 190, Danville, CA 94526-1804
24 Hour Messages (925) 838-2859
24 Hour Fax Line (925) 855-1051
Email: Dfoster@caprecut.com
Mfoster@caprecut.com
www.CAPRECUT.com

OVER 150 GARAGE PRICES TO CHOOSE FROM "THE WEEKEND GARAGE" 22' x 24' = 528 SQ. FT. 2 CAR GARAGE

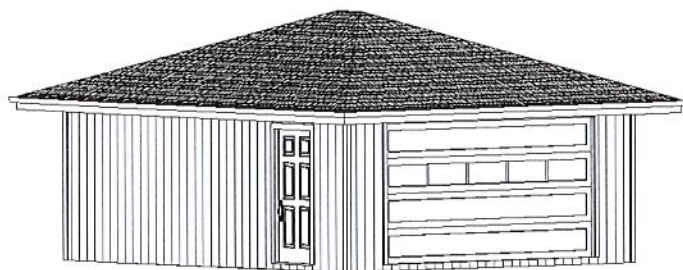


← ROOF STYLE "A" GABLE

ROOF STYLE "B" SHED →



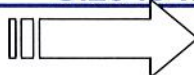
← ROOF STYLE "H" HIP



\$10,699 to \$11,449 w/ tax & freight
This garage can be standing in six hours with four workers,
roof sheathed by the end of the second day.
Easily completed in three days.

If you look inside, you will see 168 GARAGES priced to choose from. If you
don't see the size you want, just ask. We have delivered garages as small
as 12'x20' to as large as 40'x100' *Size is no problem.*

OVER



Prices subject to change 6/16



CALIF. PRE-CUT HOMES™

Dennis & Matt Foster

425 El Pintado Rd. Suite 190, Danville, CA 94526-1804

24 Hour Messages (925) 838-2859

24 Hour Fax Line (925) 855-1051

Email: Dfoster@caprecut.com

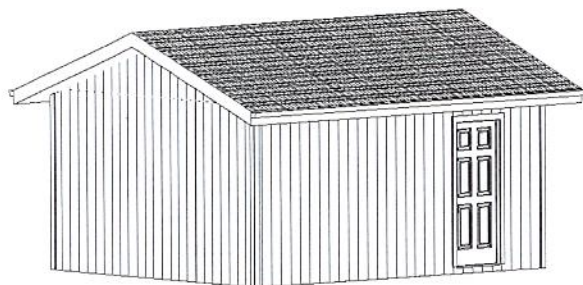
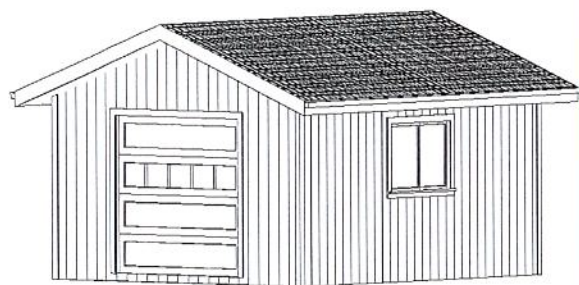
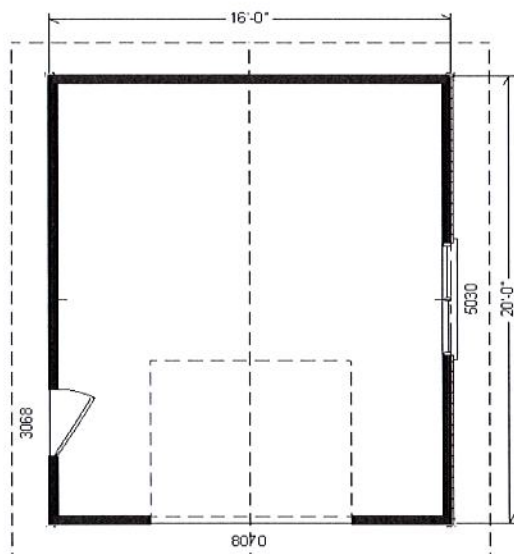
Mfoster@caprecut.com

www.CAPRECUT.com

GARAGES ★ GARAGES ★ GARAGES ★ GARAGES

All garages packages include: Factory framed wall panels, engineered trusses, (*) plans, local tax & delivery within 120 miles of Sacramento – add about \$6/mile beyond. **WE CAN DELIVER TO ALMOST ANY PLACE IN NORTHERN CALIFORNIA.** **A=** Gable end roof above garage door. **B=** Gable end roof perpendicular to garage door. **H=** Hip roof, no ends.

**Floor plan below is a 16'x20'
320 sq. ft. 1-car garage**



These are all **ONE** car garages in this section below.

SIZE	A	B	H = HIP
240 SF 1-CAR 12 X 20	56 D8 240 \$7,327	56 D8 240 \$8,305	56 D8 240 \$7,986
264 SF 1-CAR 12 X 22	60 D8 264 \$7,860	60 D8 264 \$8,716	60 D8 264 \$8,558
288 SF 1-CAR 12 X 24	64 D8 288 \$8,155	64 D8 288 \$9,127	64 D8 288 \$8,590
312 SF 1-CAR 12 X 26	68 D8 312 \$8,451	68 D8 312 \$9,538	68 D8 312 \$8,892
280 SF 1-CAR 14 X 20	64 D8 288 \$8,041	64 D8 288 \$8,683	64 D8 288 \$8,498
308 SF 1-CAR 14 X 22	64 D8 308 \$8,353	64 D8 308 \$9,110	64 D8 308 \$8,817
336 SF 1-CAR 14 X 24	68 D8 336 \$8,664	68 D8 336 \$9,537	68 D8 336 \$9,135
364 SF 1-CAR 14 X 26	72 D8 364 \$9,173	72 D8 364 \$10,162	72 D8 364 \$11,143
320 SF 1-CAR 16 X 20	64 D8 320 \$8,517	64 D8 320 \$9,061	64 D8 320 \$9,010
352 SF 1-CAR 16 X 22	68 D8 352 \$8,648	68 D8 352 \$9,307	68 D8 352 \$9,144
384 SF 1-CAR 16 X 24	72 D8 384 \$9,173	72 D8 384 \$9,948	72 D8 384 \$9,681
416 SF 1-CAR 16 X 26	76 D8 416 \$9,304	76 D8 416 \$10,391	76 D8 416 \$9,815
360 SF 1-CAR 18 X 20	68 D8 360 \$8,993	68 D8 360 \$9,439	68 D8 360 \$9,522
396 SF 1-CAR 18 X 22	72 D8 396 \$9,297	72 D8 396 \$9,858	72 D8 396 \$9,991
432 SF 1-CAR 18 X 24	76 D8 432 \$9,682	76 D8 432 \$10,358	76 D8 432 \$10,226
468 SF 1-CAR 18 X 26	80 D8 468 \$10,128	80 D8 468 \$10,920	80 D8 468 \$10,120
400 SF 1-CAR 20 X 20	72 D8 400 \$9,529	72 D8 400 \$10,081	72 D8 400 \$10,034
440 SF 1-CAR 20 X 22	68 D8 440 \$9,496	68 D8 440 \$10,163	68 D8 440 \$10,674
480 SF 1-CAR 20 X 24	80 D8 480 \$10,251	80 D8 480 \$10,506	80 D8 480 \$11,067
520 SF 1-CAR 20 X 26	84 D8 520 \$10,612	84 D8 520 \$11,510	84 D8 520 \$11,411

(*) A PORTION OF THE PLAN COST IS REBATED UPON THE DELIVERY OF THE GARAGE PACKAGE. All of these garages come with 1 White vinyl window, 1 man door, tyvar paper under siding, 5/4"x4" trim, 15/32" OSB/CCX roof sheathing, 1/2" CDX/CCX overhang sheathing, & 5/4"x6" barge and fascia. **STANDARD SPECIFICATIONS:** All exterior walls framed with 2x4 douglas fir studs 16" o.c. with 19/32" T1-11 OSB siding applied on wall panels, windows, doors headers, 16# roof load, gable siding shipped loose for field installation, exterior trim shipped loose, caulking, nails, monoxide, gable/eave vents, & z-bar tie plates.

NOTE: Garage doors, roofing material, foundation, & local framing labor not included.

Prices subject to change. Rev 6/16



**CALIF.
PRE-CUT
HOMES™**

Dennis & Matt Foster

425 El Pintado Rd. Suite 190, Danville, CA 94526-1804

24 Hour Messages (925) 838-2859

24 Hour Fax Line (925) 855-1051

Email: Dfoster@caprecut.com

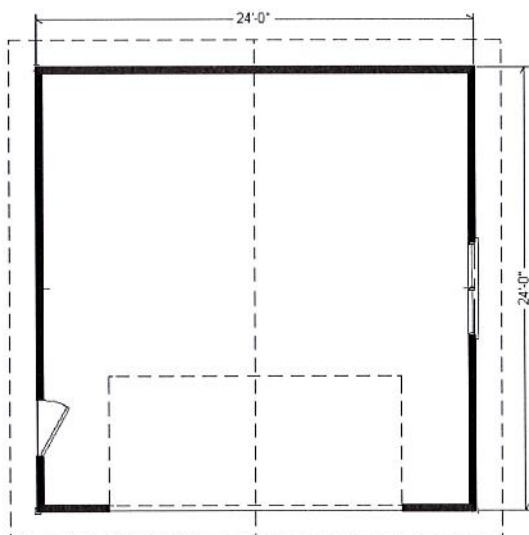
Mfoster@caprecut.com

www.CAPRECUT.com

GARAGES ★ GARAGES ★ GARAGES ★ GARAGES

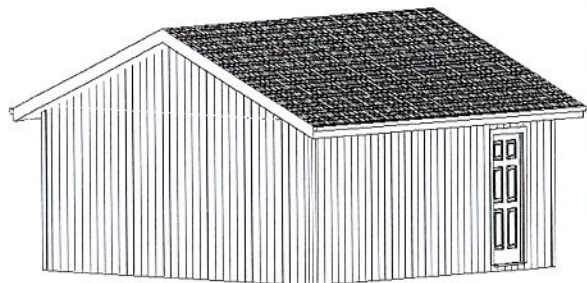
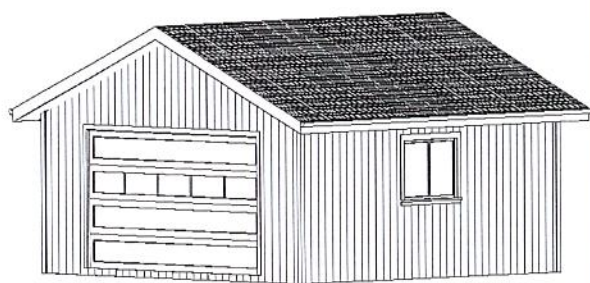
All garages packages include: Factory framed wall panels, engineered trusses, (*) plans, local tax & delivery within 120 miles of Sacramento – add about \$6/mile beyond. **WE CAN DELIVER TO ALMOST ANY PLACE IN NORTHERN CALIFORNIA.** **A**= Gable end roof above garage door. **B**= Gable end roof perpendicular to garage door. **H**= Hip roof, no ends.

**Floor plan below is a 24'x24'
576 sq. ft. 2-car garage**



These are all **TWO** car garages in this section below.

SIZE	A	B	H = HIP
440 SF 2-CAR 22 X 20	68 D16 440 \$9,611	68 D16 440 \$9,997	68 D16 440 \$10,345
528 SF 2-CAR 22 X 24	76 D16 528 \$10,699	76 D16 528 \$11,315	76 D16 528 \$11,449
572 SF 2-CAR 22 X 26	80 D16 572 \$11,175	80 D16 572 \$11,906	80 D16 572 \$11,935
616 SF 2-CAR 22 X 28	84 D16 616 \$11,453	84 D16 616 \$12,301	84 D16 616 \$12,220
660 SF 2-CAR 22 X 30	88 D16 660 \$11,830	88 D16 660 \$12,780	88 D16 660 \$12,605
480 SF 2-CAR 24 X 20	72 D16 480 \$10,087	72 D16 480 \$10,371	72 D16 480 \$10,958
528 SF 2-CAR 24 X 22	76 D16 528 \$11,011	76 D16 528 \$11,217	76 D16 528 \$11,592
576 SF 2-CAR 24 X 24	80 D16 576 \$11,208	80 D16 576 \$11,726	80 D16 576 \$11,455
672 SF 2-CAR 24 X 28	88 D16 760 \$11,995	88 D16 760 \$12,744	88 D16 760 \$12,799
720 SF 2-CAR 24 X 30	92 D16 720 \$12,389	92 D16 720 \$13,253	92 D16 720 \$13,201
520 SF 2-CAR 26 X 20	76 D16 520 \$10,564	76 D16 520 \$10,753	76 D16 520 \$11,369
624 SF 2-CAR 26 X 24	84 D16 624 \$11,717	84 D16 624 \$12,136	84 D16 624 \$12,540
728 SF 2-CAR 26 X 28	92 D16 728 \$12,537	92 D16 728 \$13,187	92 D16 728 \$13,378
780 SF 2-CAR 26 X 30	96 D16 780 \$12,947	96 D16 780 \$13,712	96 D16 780 \$13,797
560 SF 2-CAR 28 X 20	80 D16 560 \$11,373	80 D16 560 \$11,463	80 D16 560 \$12,214
672 SF 2-CAR 28 X 24	88 D16 672 \$12,226	88 D16 672 \$12,547	88 D16 672 \$13,086
784 SF 2-CAR 28 X 28	92 D16 784 \$12,881	92 D16 784 \$13,433	92 D16 784 \$13,368
843 SF 2-CAR 28 X 30	96 D16 843 \$13,308	96 D16 843 \$13,975	96 D16 843 \$14,191
900 SF 2-CAR 30 X 30	104 D16 900 \$14,063	104 D16 900 \$14,632	104 D16 900 \$14,988



(*) A PORTION OF THE PLAN COST IS REBATED UPON THE DELIVERY OF THE GARAGE PACKAGE. All of these garages come with 1 White vinyl window, 1 man door, tytar paper under siding, 5/4"x4" trim, 15/32" OSB/CCX roof sheathing, 1/2" CDX/CCX overhang sheathing, & 5/4"x6" barge and fascia. **STANDARD SPECIFICATIONS:** All exterior walls framed with 2x4 douglas fir studs 16" o.c. with 19/32" T1-11 OSB siding applied on wall panels, windows, doors headers, 16# roof load, gable siding shipped loose for field installation, exterior trim shipped loose, caulking, nails, monoxide, gable/eave vents, & z-bar tie plates.

NOTE: Garage doors, roofing material, foundation, & local framing labor not included.

Prices subject to change. Rev 6/16



Division of U.S. Pre-Cut Homes™

www.CAPRECUT.com

Prices subject to change. Rev 6/16

GARAGES GARAGES GARAGES

CALIF. PRE-CUT HOMES "GARAGES" PRICE COMPARISON OF 5 GARAGE PLANS

	1	2	3	4	5
GARAGE SIZE	16' X 24'	22' X 20'	22' X 24'	32' X 24'	40' X 30'
SQUARE FOOTAGE OF GARAGE	384 sq. ft.	440 sq. ft.	528 sq. ft.	768 sq. ft.	1,200 sq. ft.
GARAGE DOOR OPENING SIZE 8', 16', OR BOTH	8'	16'	16'	8' & 16'	(2) 16'
NUMBER OF CARS IN GARAGE	1 CAR	2 CARS	2 CARS	3 CARS	4 CARS

CALIF. PRE-CUT HOMES: INCLUSIVE OF OUR "BEST" SPECIFICATION WITH TAX & FREIGHT

A)	BASE PRICE with tax and freight	\$7,667	\$8,075	\$8,776	\$10,918	\$13,965	(A)
B)	7.50 % (The factory uses the basic California tax)	\$575	\$606	\$658	\$819	\$1,047	(B)
C)	Freight within 120 miles	\$931	\$931	\$1,264	\$1,264	\$1,264	(C)
	Total of A to C (moved below to 3)	\$9,173	\$9,612	\$10,698	\$13,001	\$16,276	

(The list below are standard specifications & optional features that one would need in order to have a finished garage)

**IF WE DON'T HAVE THE SIZE OR LAYOUT YOU ARE
LOOKING FOR, JUST GIVE US THE SIZE YOU
WANT AND WE'LL PRICE IT!**

**THE ITEMS BELOW ARE WHAT WE CALL THE "HIDDEN COST". SEE
HOW YOU CAN BUILD YOUR DREAM GARAGE AS AN "OWNER/BUILDER"
INCLUSIVE OF ALL THE BUILDING MATERIAL & ALMOST ALL THE
LABOR FOR AS LOW AS \$43 A SQ. FT. & AS HIGH AS \$59 A SQ. FT.**

Here are the "hidden costs" These prices include material & labor;

1)	Foundation (M/L) Assumed level lot	\$3,700	\$4,500	\$5,700	\$7,500	\$12,500	(1)
2)	Building Permits / School Tax \$2.00 a sq. ft.	\$768	\$880	\$1,056	\$1,540	\$2,400	(2)
3)	CALIF. PRE-CUT GARAGE (SEE ABOVE)	\$9,173	\$9,612	\$10,698	\$13,001	\$16,276	(3)
4*)	Plans for building permit (net cost)	\$1,546	\$1,442	\$1,591	\$1,896	\$2,360	(4*)
5)	Framing Labor to Put up Shell (L)	\$3,200	\$3,500	\$3,600	\$4,600	\$7,200	(5)
6)	Elect.-Rough & Finish (M/L)	\$840	\$686	\$823	\$1,002	\$1,674	(6)
7)	Gutters and Downspout (M/L)	\$317	\$264	\$317	\$405	\$429	(7)
8)	Finish Roofing Composition (M/L)	\$1,599	\$1,832	\$2,199	\$2,998	\$4,997	(8)
9)	Garage Door & Opener per plan (M/L)	\$960	\$1,400	\$1,400	\$2,200	\$2,800	(9)
10)	Lighting Fixtures (M/L)	\$120	\$180	\$180	\$180	\$240	(10)
11)	Paint-Exterior/Interior (M/L)	\$548	\$628	\$754	\$1,028	\$1,714	(11)
12)	Misc.: Drive, drywall, etc.	\$ Plus	\$ Plus	\$ Plus	\$ Plus	\$ Plus	(12)
	GRAND TOTAL 1 THRU 12	\$22,771	\$24,924	\$28,318	\$36,350	\$52,590	

Footnotes: Freight; We can deliver almost anyplace. Deliveries within 325 miles of Elk Grove CA. come with a forklift to unload service. (M/L) = Material and Labor allowance. (L) = Labor allowance (School tax can vary from city to city. We have priced in \$2.00 a sq. ft. Call your local building to department the correct cost.) *Plans Includes Drafting, Engineered, Site Plan, Title 24, & Printing at net cost. If you draft with CPH and take delivery of our package we give you a rebate off your plans.



**CALIF.
PRE-CUT
HOMES™**

Division of U.S. Pre-Cut Homes™

Dennis & Matt Foster

425 El Pintado Rd. Suite 190, Danville, CA 94526-1804

24 Hour Messages (925) 838-2859

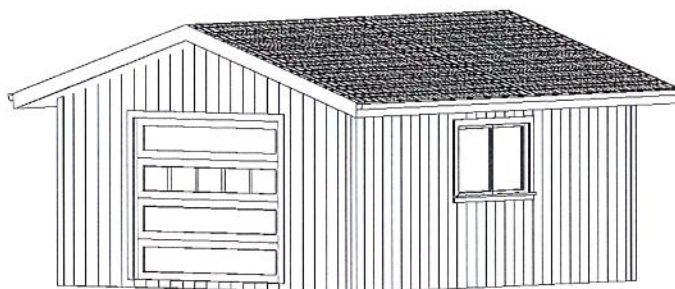
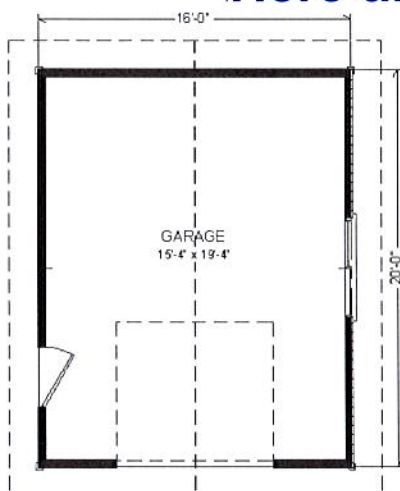
24 Hour Fax Line (925) 855-1051

Email: Dfoster@caprecut.com

Mfoster@caprecut.com

www.CAPRECUT.com

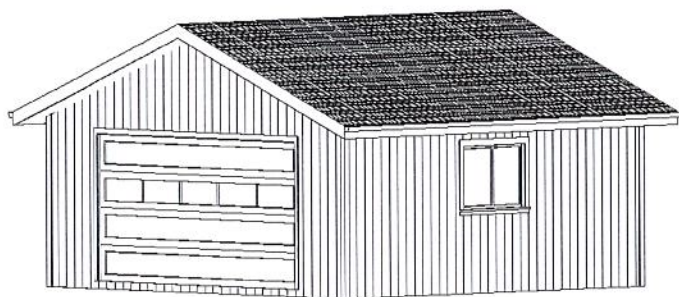
Here are three different size garages



#1 Garage 16'x20' = 320 sq. ft.

The package cost is \$8,453 w/ tax & del.*

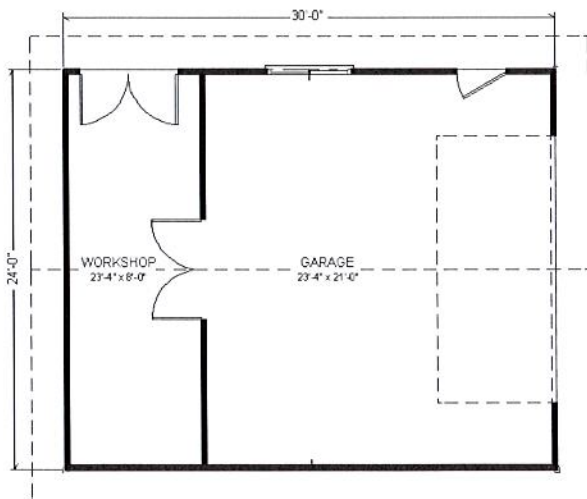
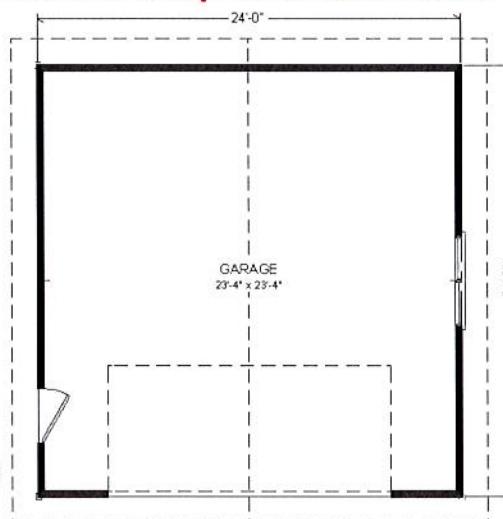
The package is \$26.41 a sq. ft. w/ tax & del.*



#2 Garage 24'x24' = 576 sq. ft.

The package cost is \$10,904 w/ tax & del.*

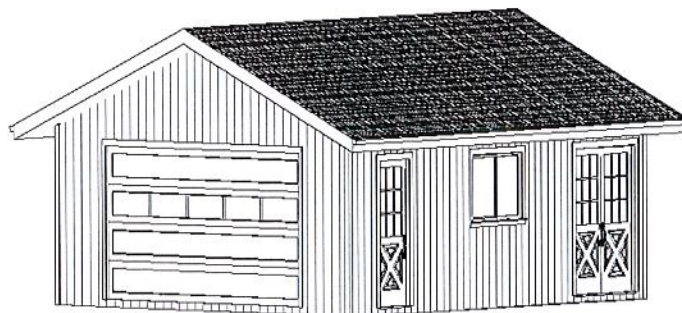
The package is \$18.93 a sq. ft. w/ tax & del.*



#3 Garage/Workshop 24'x30' = 720 sq. ft.

The package cost is \$12,724 w/ tax & del.*

The package is \$17.67 a sq. ft. w/ tax & del.*



*The delivery charge we have priced in is 120 miles from the factory located outside of Sacramento, Ca.

Plan created and copy written by Matt and Dennis Foster from CALIF. PRE-CUT HOMES.

Price subject to change 6/16

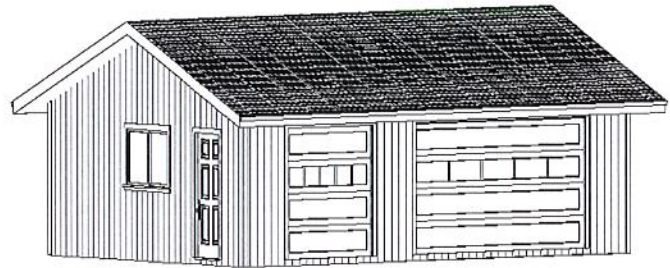
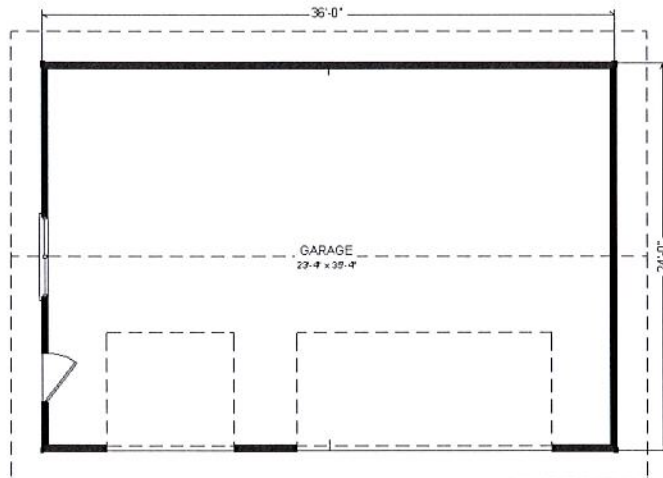


**CALIF.
PRE-CUT
HOMES™**

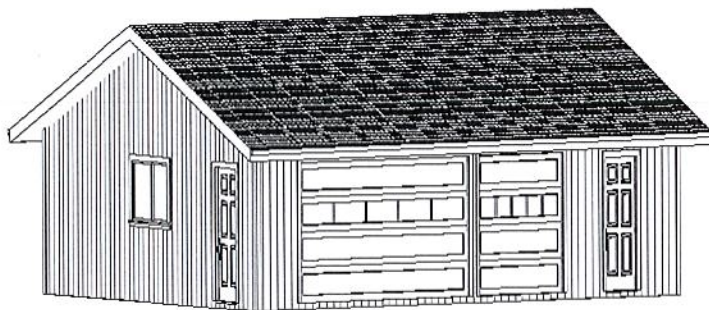
Division of U.S. Pre-Cut Homes™

Dennis & Matt Foster
425 El Pintado Rd. Suite 190, Danville, CA 94526-1804
24 Hour Messages (925) 838-2859
24 Hour Fax Line (925) 855-1051
Email: Dfoster@caprecut.com
Mfoster@caprecut.com
www.CAPRECUT.com

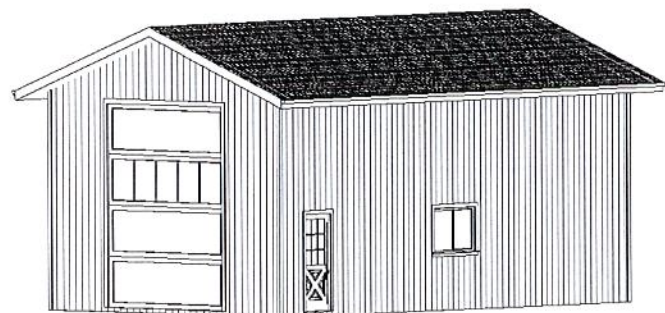
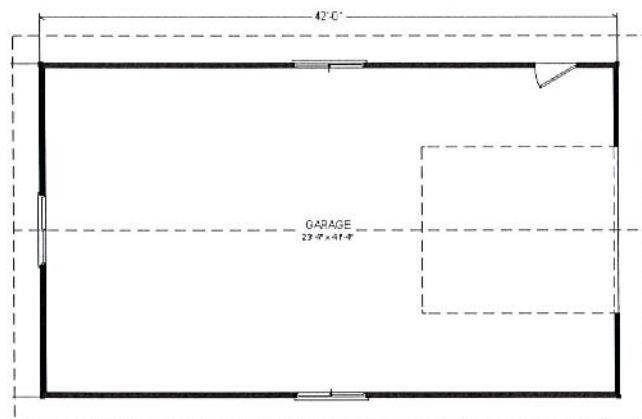
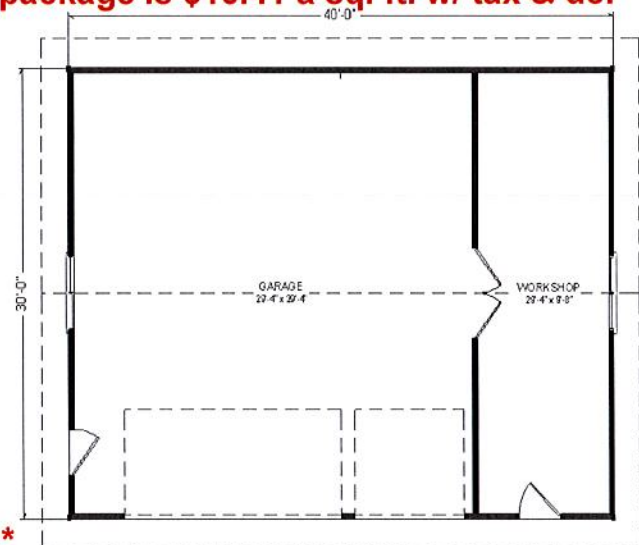
Here are three more different size garages



**#4 Garage 36'x24' = 864 sq. ft. The package cost is \$13,318 w/ tax & del.*
The package is \$15.41 a sq. ft. w/ tax & del.***



**#5 Garage/Workshop 40'x30' = 1,200 sq. ft. The package cost is \$17,759 w/ tax & del.*
The package is \$14.79 a sq. ft. w/ tax & del.***



#6 Garage 42'x24' = 1,008 sq. ft. This is an RV garage with 15' ceiling. The package cost is \$24,995 w/ tax & del.* The package is \$24.79 a sq. ft. w/ tax & del.*

* The delivery charge we have priced in is 120 miles from the factory located outside of Sacramento, Ca.
Plan created and copy written by Matt and Dennis Foster from CALIF. PRE-CUT HOMES. Price subject to change 6/16

CUSTOM GARAGES BY CALIF. PRE-CUT HOMES

PRICE COMPARISON OF 6 CUSTOM GARAGES

NAME OF CUSTOM GARAGE	1	2	3	4	5	6
GARAGE SIZE	16' X 20'	24' X 24'	24' X 30'	36' X 24'	40' X 30'	42' X 24'
SQUARE FOOTAGE OF GARAGE	320	576	720	864	1,200	1,008
GARAGE DOOR OPENING SIZE 8', 16', OR BOTH	8'	16'	16'	8' & 16'	8' & 16'	12' X 14'
NUMBER OF CARS IN GARAGE	1 CAR	2 CAR	2 CAR	3 CAR	3 CAR	1 RV

CALIF. PRE-CUT HOMES: INCLUSIVE OF OUR "BEST" SPECIFICATION WITH TAX & FREIGHT

A) BASE PRICE with tax and freight	\$6,687	\$8,967	\$10,660	\$11,213	\$15,344	\$22,075	(A)
B) 7.50 % (The factory uses the basic California tax)	\$502	\$673	\$800	\$841	\$1,151	\$1,656	(B)
C) Freight within 120 miles	\$1,264	\$1,264	\$1,264	\$1,264	\$1,264	\$1,264	(C)
Total of A to C (moved below to 3)	\$8,453	\$10,904	\$12,724	\$13,318	\$17,759	\$24,995	

(The list below are standard specifications & optional features that one would need in order to have a finished garage)

**IF WE DON'T HAVE THE SIZE OR LAYOUT YOU ARE
LOOKING FOR, JUST GIVE US THE SIZE YOU
WANT AND WE'LL PRICE IT!**

**THE ITEMS BELOW ARE WHAT WE CALL THE "HIDDEN COST". SEE
HOW YOU CAN BUILD YOUR DREAM GARAGE AS AN "OWNER/BUILDER"
INCLUSIVE OF ALL THE BUILDING MATERIAL & ALMOST ALL THE
LABOR FOR AS LOW AS \$41 A SQ. FT. & AS HIGH AS \$63 A SQ. FT.**

Here are the "hidden costs" These prices include material & labor;

1) Foundation (M/L) Assumed level lot	\$3,200	\$6,220	\$7,400	\$8,825	\$12,500	\$10,500	(1)
2) Building Permits / School Tax \$2.00 a sq. ft.	\$640	\$1,152	\$1,440	\$1,728	\$2,400	\$2,016	(2)
3) CALIF. PRE-CUT GARAGE (SEE ABOVE)	\$8,034	\$10,384	\$12,147	\$12,733	\$16,972	\$22,733	(3)
4*) Plans for building permit (net cost)	\$1,572	\$1,617	\$1,896	\$1,975	\$2,360	\$2,155	(4*)
5) Framing Labor to Put up Shell (L)	\$3,200	\$3,930	\$4,400	\$5,250	\$7,200	\$7,000	(5)
6) Elect.-Rough & Finish (M/L)	\$825	\$825	\$825	\$825	\$825	\$825	(6)
7) Gutters and Downspout (M/L)	\$194	\$233	\$291	\$349	\$204	\$407	(7)
8) Finish Roofing Composition (M/L)	\$915	\$1,647	\$2,059	\$2,471	\$3,432	\$2,882	(8)
9) Garage Door & Opener per plan (M/L)	\$960	\$1,400	\$1,400	\$2,200	\$2,200	\$1,800	(9)
10) Lighting Fixtures (M/L)	\$165	\$198	\$209	\$220	\$242	\$242	(10)
11) Paint-Exterior/Interior (M/L)	\$548	\$750	\$936	\$1,200	\$1,600	\$1,500	(11)
12) Misc.: Drive, drywall, etc.	\$ Plus	\$ Plus	\$ Plus	\$ Plus	\$ Plus	\$ Plus	(12)
GRAND TOTAL 1 THRU 12	\$20,253	\$28,356	\$33,003	\$37,776	\$49,935	\$52,060	

Footnotes: Freight; We can deliver almost anyplace. Deliveries within 325 miles of Elk Grove CA. come with a forklift to unload service. (M/L) = Material and Labor allowance. (L) = Labor allowance (School tax can vary from city to city. We have priced in \$2.00 a sq. ft. Call your local building to department the correct cost.) *Plans Includes Drafting, Engineered, Site Plan, Title 24, & Printing at net cost. If you draft with CPH and take delivery of our package we give you a rebate off your plans.



**CALIF.
PRE-CUT
HOMES™**

Dennis & Matt Foster

425 El Pintado Rd. Suite 190, Danville, CA 94526-1804

24 Hour Messages (925) 838-2859

24 Hour Fax Line (925) 855-1051

Email: Dfoster@caprecut.com

Mfoster@caprecut.com

www.CAPRECUT.com

CREATE YOUR OWN CUSTOM DESIGN!

If you were not able to find a plan in our catalogs that you preferred,
maybe a custom plan is what you are looking for?

Here are eight different drafting examples from a 528 sq. ft. garage, a 1,000 sq. ft. addition, and six custom homes ranging from 1,500 sq. ft. to 4,000 sq. ft. The square footage for each building is on the top three line. These eight different sizes should help you determine what our drafting charges should be. For a final price on a **CUSTOM DESIGN**, please call us at (925) 838-2859 and we will be more than happy to give you an estimate. These examples are a good place to start for "ballpark pricing".

DRAFTING FEES: GARAGES = \$0.95 SQ. FT. / ADDITION = \$1.90 SQ. FT. / 2-STORY ADDITIONS = \$2.10 SQ. FT.

ONE STORY HOUSE = \$1.68 SQ. FT. / TWO STORY HOUSE = \$1.88 SQ. FT. / THREE STORY = \$1.90 SQ. FT.

MINIMUM DRAFTING FEE OF \$625 ON:

Garage under 658 sq. ft. / One-Story Homes under 372 sq. ft. / Two-Story Homes under 332 sq. ft. / Additions under 329 sq. ft.

	GARAGE	CUSTOM ONE STORY			CUSTOM TWO STORY				ADDITION	
	Sq. Ft.	Sq. Ft.	Sq. Ft.	Sq. Ft.	Sq. Ft.	Sq. Ft.	Sq. Ft.	Sq. Ft.	Sq. Ft.	
1) House	N/A	1,500	2,000	2,200	2,500	3,000	4,000	1,000 1 story		(1)
2) Garage 22' x 24'	528	528	528	528	528	800	800	N/A		(2)
3) FFA =(Floor Factor Area)	528	2,028	2,528	2,728	3,028	3,800	4,800	1,000		(3)
4) DRAFTING:	\$625	\$3,407	\$4,247	\$5,129	\$5,693	\$7,144	\$9,024	\$1,900		(4)
5) Dealer setup:	\$250	\$350	\$350	\$350	\$350	\$350	\$350	\$350		(5)
6) Printing Allowance:	\$250	\$250	\$250	\$300	\$300	\$300	\$300	\$250		(6)
7) Sub Total:	\$1,125	\$4,007	\$4,847	\$5,779	\$6,343	\$7,794	\$9,674	\$2,500		(7)
8) Drafting Rebate. See below: (**)	<\$211>	<\$1,399>	<\$1,744>	<\$2,155>	<\$2,392>	<\$3,002>	<\$3,792>	<\$690>		(8)

ENGINEERING FEES:

Single Story with Slab Floor: \$1.10 a sq. ft. / (*) Single Story with a Raised Wood Floor: \$1.17 a sq. ft.

Two Story with Slab Floor: \$1.34 a sq. ft. / (*) Two Story with a Raised Wood Floor: \$1.43 a sq. ft.

MINIMUM ENGINEERING FEE OF \$650 ON:

1-Story w/ slab fl. under 590 sq. ft. / 1-Story w/ raised fl. under 555 sq. ft.

2-Story w/ slab fl. under 485 sq. ft. / 2-Story w/ raised fl. under 454 sq. ft.

9) ENGINEERING:(*)	\$650	\$2,373	\$2,958	\$3,901	\$4,330	\$5,434	\$6,864	\$1,170		(9)
10) Plot Plan / Site Plan:	\$300	\$300	\$300	\$300	\$300	\$300	\$300	\$300		(10)
11) Title 24 & CALGreen:	N/A	\$450	\$450	\$450	\$450	\$450	\$450	\$500		(11)
12) Wet stamp: If req.\$200	Add	Add	Add.	Add.	Add.	Add.	Add.	Add		(12)
13) Grading Plan:	By other	By other	By other	By other	By other	By other	By other	By other		(13)
14) Soils Report:	By other	By other	By other	By other	By other	By other	By other	By other		(14)
15) Sprinkler system design & layout:	By other	By other	By other	By other	By other	By other	By other	By other		(15)
16) Sub Total:	\$950	\$3,123	\$3,708	\$4,651	\$5,080	\$6,184	\$7,614	\$1,970		(16)
17) Grand Total:	\$2,075	\$7,130	\$8,555	\$10,430	\$11,423	\$13,978	\$17,288	\$4,470		(17)
18) Less Rebate:	-\$211	-\$1,399	-\$1,744	-\$2,155	-\$2,392	-\$3,002	-\$3,792	-\$690		(18)
19) Total Net Fee after rebate:	\$1,864	\$5,731	\$6,811	\$8,275	\$9,031	\$10,976	\$13,496	\$3,780		(19)

Most building departments are using the 2013 C.B.C. This may require the engineer to inspect the foundation before pouring. There could be an extra charge for job site visit: \$100 to \$700. Our drafting service is provided, as an extra, to help you in designing your home for our open wall panel system. This helps us in making your custom home more affordable. The plans can be used by a local builder for almost any framing system. Site plan cost between \$250-\$500. (**) As an extra incentive to using our building package system, CALIF. PRE-CUT HOMES, will give you a drafting rebate against your lumber contract with CALIF. PRE-CUT HOMES.

Price subject change 2/15

DO IT YOURSELF GARAGE

GARAGE SIZE: _____

SIDING SELECTION: T1-11 19/32 O.S.B. STUCCO LAP OTHER

BUILDING WRAP: TYPAR NONE

WALL HEIGHT: 8' 9' 10' OTHER

WALL SIZE: 2X4 2X6

ROOFING: COMP SHAKE TILE METAL OTHER

ROOF PITCH: / 12 (Roofing material is not in contract.)

INTERIOR CEILING: FLAT SLOPED / SCISSOR TRUSS RAFTERS

ROOF SHEATHING: 15/32" 19/32" TECH SHIELD NOT SHURE

ROOF OVERHANG: NONE 12" 18" 24" OTHER

ROOF BARGE: NONE 5/4X4 5/4X6 5/4X8 OTHER

ROOF FASCIA: NONE 5/4X4 5/4X6 5/4X8 OTHER

GARAGE DOOR OPENING: (For vehicle)

 8' 9' 10' 12' 15' 16' OTHER

DOOR OPENING HIGHTH: (For vehicle)

 8' 9' 10' 12' 15' 16' OTHER

(Garage doors are not in contract.)

PERSON DOORS: 2868 3068 DOUBLE 2668 D 2868 D 3068

(We usually recommend getting your own door locally, but we can supply person doors.)

EXTERIOR TRIM: DOOR WINDOW CORNER GABLE

 OTHER SIZE: 5/4X4" 5/4X6" 5/4X8" 5/4X10" 5/4X12"

WINDOWS TYPE: VINYL STYLE LINE VINYL CLASSIC WOOD CLAD

 ULTRE SERIES ALUMINUM OTHER

WINDOWS OPTIONS: LOW "E" TINTED GRIDS SUN COAT

 OTHER

VENTS: 14X12 GAL. 14X24 GAL. 30" 1/2 RD 30" FULL RD OTHER

CURBS: NO YES, IF SO HOW HIGH 6" 8" 10" 12" OTHER

SIMPSON STRONG WALLS: 16" 22" WIDE OR 18" 24" 32" 48" WIDE

OTHER SPECIAL REQUEST: _____

NAME _____

ADDRESS _____

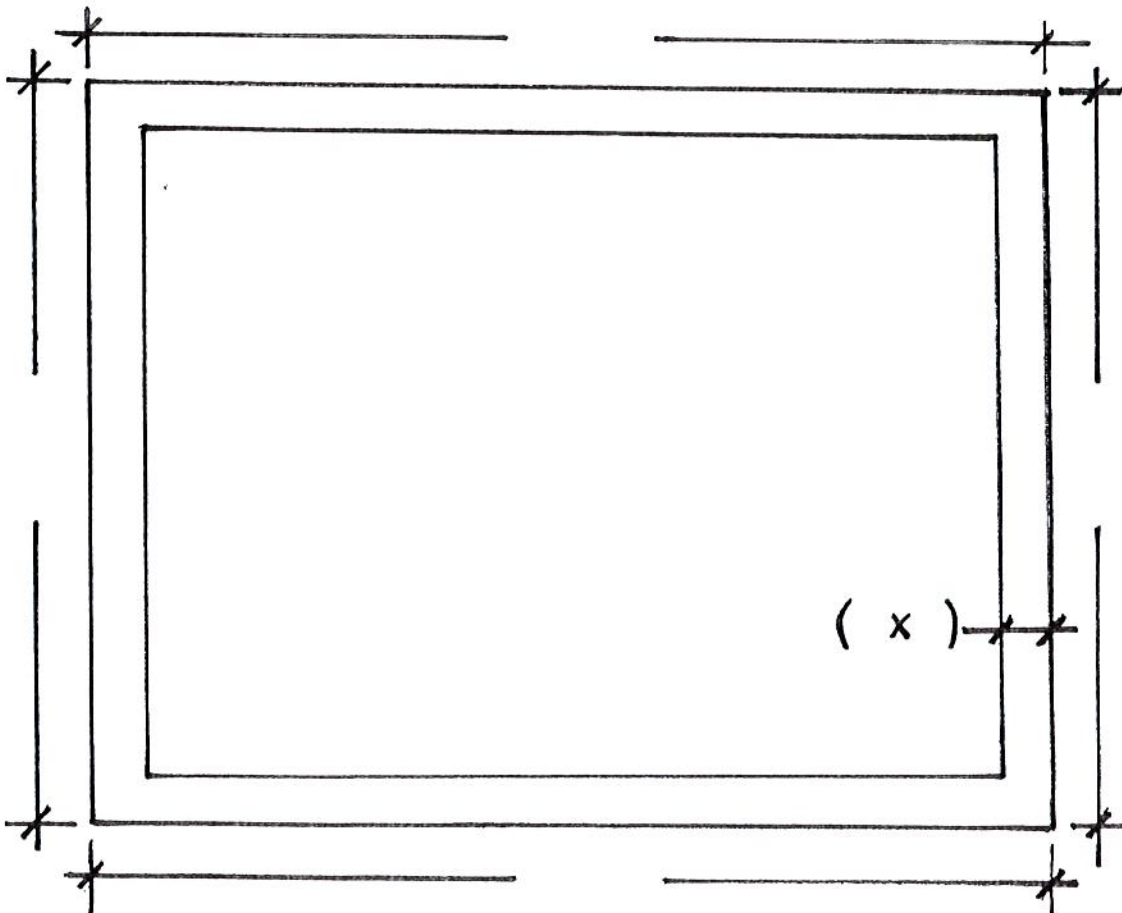
TOWN _____

HOME PHONE _____

FAX NUMBER _____

EMAIL _____

ZIP _____



CALIF. PRE-CUT HOMES
 425 EL PINTADO RD., DANVILLE, CA 94562-1804
 VOICE: 925-838-2859
 FAX: 925-855-1051



**CALIF.
PRE-CUT
HOMES™**

Dennis & Matt Foster
425 El Pintado Rd. Suite 190, Danville, CA 94526-1804
24 Hour Messages (925) 838-2859
24 Hour Fax Line (925) 855-1051
Email: Dfoster@caprecut.com
Mfoster@caprecut.com
www.CAPRECUT.com

Garage Package Specifications

1. **WALL PANELS:** Up to 12' long, and 8' tall factory assembled in to wall panels per the current California Building Code (CBC.) consisting of the following materials (9' and 10' tall walls are optional):
 - (a) **WALL FRAMING:** Dry 2"x 4" (2"x 6" optional) 16" on center (oc) dry Douglas Fir studs on walls. All panels have second top plate shipped loose for job site installation.
 - (b) **WINDOWS:** Dual-glazed 5'0" wide x 3'6" high slider, in vinyl frame with woven pile weather stripping and vinyl glazing. Other window sizes are standard options. Windows are installed, caulked, and flashed per U.B.C. and window manufacturers' specifications. Screens included for all operable windows.
 - (c) **EXTERIOR SIDING:** 19/32" Oriented Strand Board (OSB) SmartPANEL siding, primed and embossed with 8" on center kerf pattern (other patterns and materials optional; OSB SmartLAP and cement fiber lap sidings for job site application over OSB sheathing optional). Walls that require roof flashing, tie downs and/or shear straps (garage wing walls), may have siding shipped loose for job site application.
 - (d) **EXTERIOR SHEATHING:** 3/8" OSB sheathing in lieu of siding is a standard option. Factory installed when stucco or other job site applied sidings are to be used.
 - (e) **BUILDING PAPER:** TYPAR "House Wrap" under all factory installed siding and shipped loose for field installation under all supplied loose siding.
2. **TREATED PLATE FOR SLAB FOUNDATION:** Pressure treated to be field installed prior to erection on all exterior walls of panels (see slab foundation plan details).
3. **DOUBLE TOP PLATE:** Shipped loose for field installation on all walls (see plan details).
4. **CORNER AND PANEL JOINT STUDS:** Pre-cut for field installation at all exterior corners and at lap of building paper at panel joints. See plan details and panel plan cover page.
5. **BEAMS, POSTS & HEADERS:** Sized per plan:
 - (a) **DOOR HEADER & OTHER STRUCTURAL BEAMS AND POSTS, NOT EXPOSED:** Solid Douglas Fir or Glu-Lam Beams.
 - (b) **EXPOSED BEAMS AND POSTS:** Solid #1 Douglas Fir.
 - (c) **WINDOW AND DOOR HEADERS:** Solid Douglas Fir up to design limits, then Glu-Lam Beams.



**CALIF.
PRE-CUT
HOMES™**

Dennis & Matt Foster

425 El Pintado Rd. Suite 190, Danville, CA 94526-1804
24 Hour Messages (925) 838-2859
24 Hour Fax Line (925) 855-1051
Email: Dfoster@caprecut.com
Mfoster@caprecut.com
www.CAPRECUT.com

6. **ROOF TRUSSES** : Engineered and manufactured per plan. Eave blocks and outlookers pre-cut. Truss ties and gable truss bracing provided per engineering. 4/12 roof slope standard. Other slopes optional by custom plan quote only.
7. **FIELD BRACING AND MISCELLANEOUS BLOCKING**: 2"x 4" and 2"x 8".
8. **SLIDING GLASS DOOR AND SCREEN**: Optional. Same frame style and color as windows. Installed in wall panels when practical, else shipped unassembled for job site installation.
9. **ACRYLIC CAULK**: 1/10 gallon tubes shipped loose for field installed windows, exterior doors and mudsill.
10. **NAILS, METAL TIE PLATES, SPLICE PLATES, "Z" BAR, FRAMING HANGERS AND HARDWARE, ETC.**: Per plan, UBC, or engineer's specifications.
 - **NOTE: FOUNDATION ANCHORS AND HOLD DOWNS**: Not included (should have already been installed in concrete foundation slab at time of garage package delivery).
11. **GARAGE VENTS**: 6"x 14" 1/2" vents, shipped loose.
12. **DOORS**: Pre-hung fiberglass insulated door with combo sills and weather stripping. All doors include temporary construction lockset. All doors are shipped pre-hung for job site installation in factory framed openings.
 - (a) **GARAGE SIDE DOOR**: 3068 "slab" door. (Single fixed light or 9-panel door optional).
 - (b) **CAR DOOR**: Not Included in base package price. We recommend that the door be ordered and installed by local door company.
13. **GABLE SHEATHING AND GARAGE BEAM COVERING**: Same as exterior siding/sheathing, shipped loose for field application.
14. **ROOF FIELD SHEATHING**: 15/32" OSB (19/32" and 23/32" optional).
15. **ROOF OVERHANG EXPOSED SHEATHING**: 1/2" CCX plywood (5/8" and 3/4" CCX optional).
16. **BARGE RAFTERS AND FASCIA**: 5/4 x 6" Smart-Trim (primed, embossed engineered lumber) shipped loose for job site application per plan.
17. **EXTERIOR WINDOW, DOOR, CORNER, EAVE & RAKE TRIM**: 5/4 x 4 and 5/4 x 6 Smart-Trim (primed, embossed engineered lumber) shipped loose for job site application per plan.
18. **EAVE VENTS**: One metal screen vent in lieu of every fourth eave block for trusses.
19. **GABLE VENTS**: Metal 14"x 24" gable end vents located per plan.