



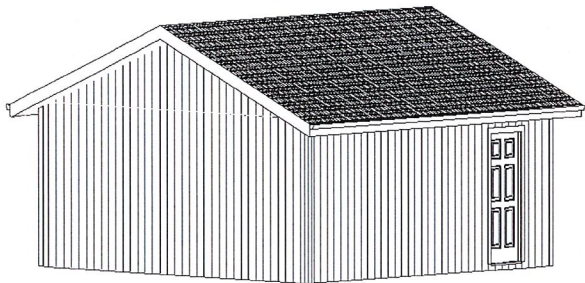
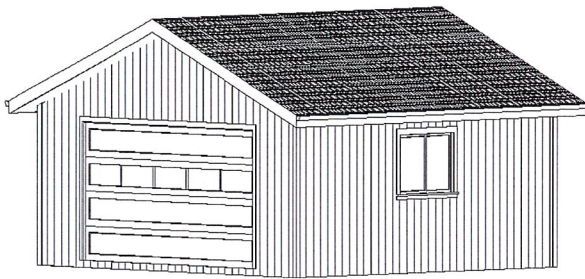
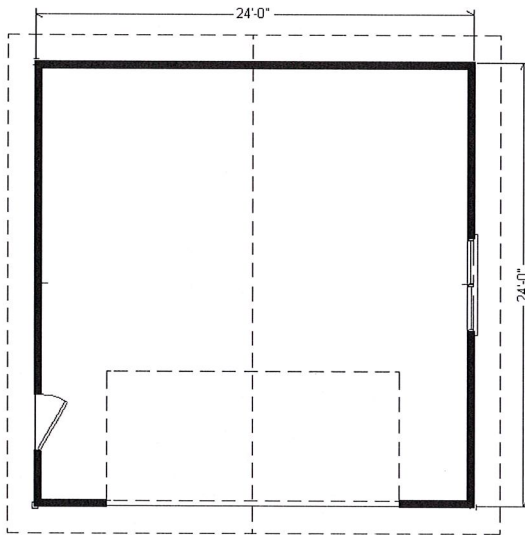
**Dennis & Matt Foster**  
 425 El Pintado Rd. Suite 190, Danville, CA 94526-1804  
 24 Hour Messages (925) 838-2859  
 24 Hour Fax Line (925) 855-1051  
 Email: Dfoster@caprecut.com  
 Mfoster@caprecut.com  
 www.CAPRECUT.com

**GARAGES ★ GARAGES ★ GARAGES ★ GARAGES**

All garages packages include: Factory framed wall panels, engineered trusses, (\*) plans, local tax & delivery within 120 miles of Sacramento – add about \$6/mile beyond. **WE CAN DELIVER TO ALMOST ANY PLACE IN NORTHERN CALIFORNIA.** A= Gable end roof above garage door. B= Gable end roof perpendicular to garage door. H= Hip roof, no ends.

Floor plan below is a 24'x24'  
 576 sq. ft. 2-car garage

These are all **TWO** car garages in this section below.



SIZE	<u>A</u>	<u>B</u>	<u>H = HIP</u>
440 SF 2-CAR <b>22 X 20</b>	68 D16 440 \$9186	68 D16 440 \$9,578	68 D16 440 \$9,964
528 SF 2-CAR <b>22 X 24</b>	76 D16 528 \$10,242	76 D16 528 \$10,852	76 D16 528 \$11,035
572 SF 2-CAR <b>22 X 26</b>	80 D16 572 \$10,694	80 D16 572 \$11,414	80 D16 572 \$11,497
616 SF 2-CAR <b>22 X 28</b>	84 D16 616 \$10,965	84 D16 616 \$11,794	84 D16 616 \$11,774
660 SF 2-CAR <b>22 X 30</b>	88 D16 660 \$11,326	88 D16 660 \$12,252	88 D16 660 \$12,143
480 SF 2-CAR <b>24 X 20</b>	72 D16 480 \$9,640	72 D16 480 \$9,935	72 D16 480 \$10,551
528 SF 2-CAR <b>24 X 22</b>	76 D16 528 \$10,533	76 D16 528 \$10,760	76 D16 528 \$11,177
576 SF 2-CAR <b>24 X 24</b>	80 D16 576 \$10,729	80 D16 576 \$11,247	80 D16 576 \$11,023
672 SF 2-CAR <b>24 X 28</b>	88 D16 760 \$11,484	88 D16 760 \$12,221	88 D16 760 \$12,335
720 SF 2-CAR <b>24 X 30</b>	92 D16 720 \$11,862	92 D16 720 \$12,708	92 D16 720 \$12,720
520 SF 2-CAR <b>26 X 20</b>	76 D16 520 \$10,095	76 D16 520 \$10,301	76 D16 520 \$10,952
624 SF 2-CAR <b>26 X 24</b>	84 D16 624 \$11,216	84 D16 624 \$11,641	84 D16 624 \$12,090
728 SF 2-CAR <b>26 X 28</b>	92 D16 728 \$12,004	92 D16 728 \$12,648	92 D16 728 \$12,896
780 SF 2-CAR <b>26 X 30</b>	96 D16 780 \$12,398	96 D16 780 \$13,151	96 D16 780 \$13,298
560 SF 2-CAR <b>28 X 20</b>	80 D16 560 \$10,882	80 D16 560 \$10,996	80 D16 560 \$11,780
672 SF 2-CAR <b>28 X 24</b>	88 D16 672 \$11,703	88 D16 672 \$12,035	88 D16 672 \$12,618
784 SF 2-CAR <b>28 X 28</b>	92 D16 784 \$12,342	92 D16 784 \$12,893	92 D16 784 \$12,930
843 SF 2-CAR <b>28 X 30</b>	96 D16 843 \$12,752	96 D16 843 \$13,412	96 D16 843 \$13,690
900 SF 2-CAR <b>30 X 30</b>	104 D16 900 \$13,470	104 D16 900 \$14,038	104 D16 900 \$14,453

(\*) A PORTION OF THE PLAN COST IS REBATED UPON THE DELIVERY OF THE GARAGE PACKAGE. All of these garages come with 1 White vinyl window, 1 man door, tympar paper under siding, 5/4"x4" trim, 15/32" OSB/CCX roof sheathing, 1/2" CDX/CCX overhang sheathing, & 5/4"x6" barge and fascia. **STANDARD SPECIFICATIONS:** All exterior walls framed with 2x4 douglas fir studs 16" o.c. with 19/32" T1-11 OSB siding applied on wall panels, windows, doors headers, 16# roof load, gable siding shipped loose for field installation, exterior trim shipped loose, caulking, nails, monoxide, gable/eave vents, & z-bar tie plates.

**NOTE:** Garage doors, roofing material, foundation, & local framing labor not included.

Prices subject to change. Rev 11/15